



MONTHLY MEMBERSHIP PROGRESS REPORT

District 26 M1

Results as of: 6/30/2015

GMT: HAL GRIFFIN

LOCATION MISSOURI

GMT CA 1

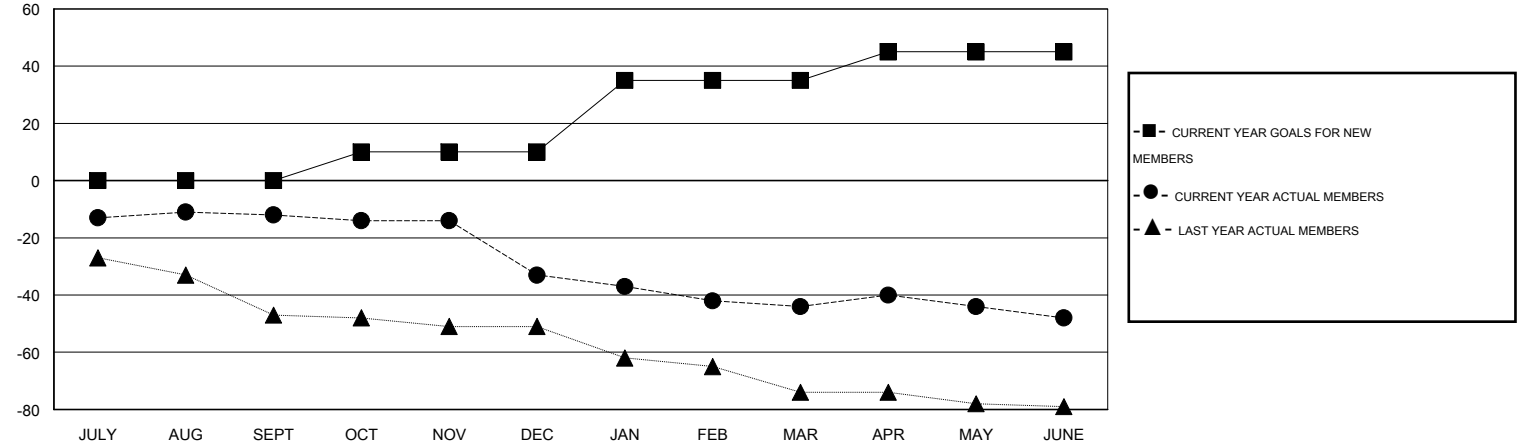
Clubs				
RESULTS FOR 2014-2015				
QUARTER	NEW CLUB GOAL	NEW CLUBS	DROPPED CLUBS	NET GAIN/LOSS
JULY/AUG/SEPT	0	0	0	0
OCT/NOV/DEC	0	0	2	-2
JAN/FEB/MAR	1	0	0	0
APR/MAY/JUNE	0	0	0	0

Members				
RESULTS FOR 2014-2015				
QUARTER	NEW MEMBER GOAL	CHARTER AND NEW MEMBERS ADDED	DROPPED MEMBERS	NET GAIN/LOSS
JULY/AUG/SEPT	0	39	51	-12
OCT/NOV/DEC	10	12	33	-21
JAN/FEB/MAR	25	24	35	-11
APR/MAY/JUNE	10	32	36	-4

GOALS AND ACTUAL NEW CLUBS CUMULATIVE



GOALS AND ACTUAL MEMBERS CUMULATIVE



DROPPED CLUBS: 2	30 CLUBS OF 46 ADDED 1 OR MORE NEW MEMBERS	GENDER DISTRIBUTION
		MALE 913 (77.83%)
		FEMALE 260 (22.17%)
DROPPED MEMBERS	CLICK HERE FOR HEALTH ASSESSMENT DATA	FAMILY UNIT MEMBERS 155
DECEASED 15		HEAD OF HOUSEHOLD 77
CLUB CANCELLED 23		NON-HEAD OF HOUSEHOLD 78
OTHER 117		
TOTAL 155		